

# Groundwater Contamination in Rural Areas – Sources, Health Risks, and Strategies for Clean Water Access

Gaurav Saxena<sup>1\*</sup>, Priyank Singhal<sup>2</sup>

<sup>1</sup> Department of Computer Science and IT, Teerthanker Mahaveer University, Mordabad, India

<sup>2</sup> Department of Computer Science and IT, Teerthanker Mahaveer University, Mordabad, India

\*Corresponding-author:-Gaurav Saxena, Email:- kumar1.saxena@gmail.com

---

## ARTICLE INFO

Received: 10 Oct 2024

Revised: 2 Nov 2024

Accepted: 10 Dec 2024

## ABSTRACT

Groundwater contamination in rural areas represents a significant global concern, threatening food security, human health, and the achievement of sustainable development goals. In many low- and middle-income countries—and increasingly within underserved rural communities of high-income nations—populations depend on untreated surface and groundwater sources for drinking and domestic use. These water sources are frequently contaminated by a combination of geogenic and anthropogenic pollutants, including arsenic, fluoride, heavy metals, inadequately treated domestic waste, open defecation, industrial effluents, and agricultural runoff containing nitrates and pesticides. Exposure to these contaminants is associated with a wide range of acute and chronic health effects, including methemoglobinemia, cholera, typhoid, diarrhoeal diseases, fluorosis, arsenicosis, and long-term toxic exposure. This paper presents a comprehensive synthesis of the major sources of groundwater contamination in rural areas, associated public health risks, and evidence-based strategies for improving access to safe drinking water. Employing a mixed-methods approach, the study integrates international case studies, regional water quality assessments, public health data, and policy analyses from regions such as South Asia, Sub-Saharan Africa, and Latin America. Water quality indicators are evaluated against World Health Organization (WHO) drinking water standards to identify critical gaps in water access, quality monitoring, and pollution mitigation efforts. In addition, the review highlights emerging applications of Machine Learning (ML), Artificial Intelligence (AI), and Internet of Things (IoT)-based technologies in groundwater quality monitoring, contamination prediction, health risk assessment, and decision-support systems. These technologies offer promising opportunities for the early identification of contamination hotspots, forecasting of water quality trends, and optimization of water resource management in rural settings. The findings underscore the importance of integrated and context-specific interventions, including inclusive water governance, community-led sanitation initiatives, decentralized monitoring systems, affordable household water treatment technologies, and intelligent data-driven management approaches. The study emphasizes the need to combine technological innovation with institutional capacity-building and behavioral change to enhance rural water security. Ultimately, it calls for prioritizing groundwater protection and sustainable water management within national policy frameworks and global development agendas to accelerate progress toward Sustainable Development Goal 6 (SDG 6): Clean Water and Sanitation for All.

**Keywords:** Groundwater contamination; Rural water quality; Machine learning; Water quality monitoring; Health risk assessment; Sustainable Development Goal 6 (SDG 6).

---

## Impact of the Study

This study addresses the urgent global issue of water pollution in rural areas and its extensive implications for public health, food security, and sustainable development. By compiling data from diverse geographic regions and comparing it with World Health Organization (WHO) drinking water standards, the research offers a thorough analysis of the primary sources of contamination and their health-related consequences. Through an interdisciplinary framework that combines environmental science, public health, and policy

evaluation, the study presents evidence-based solutions to enhance rural water quality. It places particular emphasis on decentralized monitoring systems, cost-effective water treatment technologies, and active community participation—approaches that are especially suited to low-resource settings. The findings provide valuable insights for policymakers, development agencies, and public health professionals committed to achieving Sustainable Development Goal 6: Clean Water and Sanitation. Ultimately, this study contributes to advancing equitable access to safe water, guiding targeted interventions, and building resilience in vulnerable rural populations.

### Introduction

Access to safe and clean drinking water is widely recognized as a fundamental human right and an essential component of public health. This is especially critical for rural populations, who often face systemic challenges due to inadequate infrastructure and weak water governance. In many developing and middle-income countries, rural communities rely predominantly on untreated surface and shallow groundwater sources, which are frequently contaminated by both natural geochemical processes and anthropogenic activities. This contamination not only poses severe health risks but also obstructs progress towards global development objectives such as poverty alleviation, gender equality, universal education, and sustainable agriculture (WHO & UNICEF, 2023; Jones et al., 2021). Figure 1 provides the theoretical basis for understanding why groundwater quality has become a major public health concern. Although the Earth is often described as a “water-rich planet,” the majority of global water resources are not directly usable for human consumption. Approximately 97% of Earth’s water exists as saline water in oceans, which is unsuitable for drinking and most agricultural purposes without costly desalination. Of the remaining fraction that is classified as freshwater, a substantial portion is locked in icecaps and glaciers (about 68.7%), leaving only a limited share available as liquid freshwater. Groundwater constitutes nearly 30.1% of global freshwater reserves, making it the largest accessible freshwater source for human use. In contrast, surface freshwater resources are comparatively small, with lakes accounting for approximately 87% of surface freshwater and swamps contributing around 11%. This distribution highlights a key theoretical principle in environmental health: human societies depend heavily on groundwater not because it is abundant, but because it represents the most stable and accessible portion of freshwater. As a result, any decline in groundwater quality has disproportionate consequences for drinking water security, food production, and public health. Since groundwater contamination often remains undetected and persists for long durations due to slow aquifer renewal, the limited availability of usable freshwater reinforces the need for continuous groundwater monitoring, risk assessment, and preventive public health interventions. Safe groundwater is closely tied to the fundamental right to clean drinking water and to the broader goals of sustainable development.

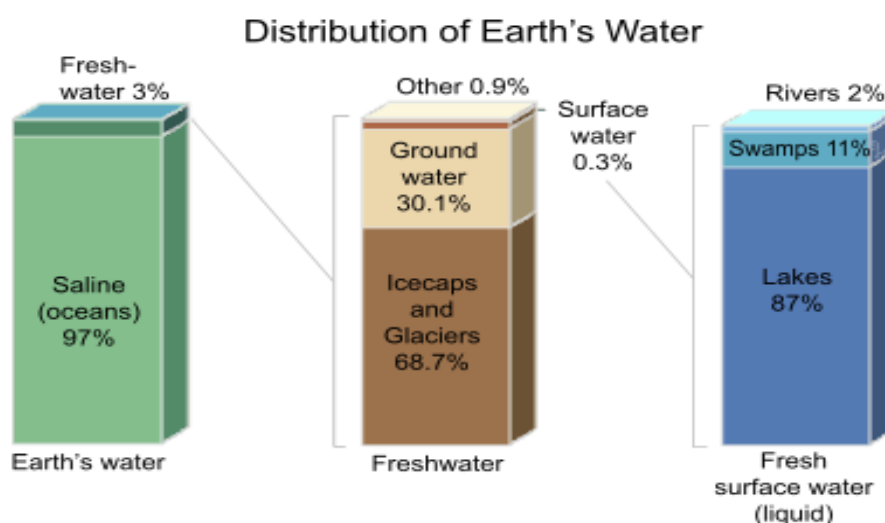


Figure 1: Water Distribution on Earth

Globally, water contamination in rural settings remains a persistent challenge. As per the 2023 Joint Monitoring Programme by WHO and UNICEF, over two billion people still lack access to safely managed drinking water services, with approximately 80% of them residing in rural areas. In Sub-Saharan Africa,

more than 60% of the rural population relies on unimproved water sources, while in South Asia, rural communities are frequently exposed to pollutants from industrial waste, agricultural runoff, and domestic sewage (Patel et al., 2022; Da Costa & Amenu, 2020). In India, which houses the world’s largest rural population, an estimated 63 million people are exposed to harmful contaminants such as fluoride, arsenic, nitrate, and microbial pathogens, despite large-scale rural water supply initiatives. Similarly, Bangladesh continues to face a public health emergency due to naturally occurring arsenic in groundwater, affecting around 20 million people (Roy & Hossain, 2024). In Latin America, rural populations living near mining and agricultural zones frequently report exposure to heavy metals and pesticide residues (Torres et al., 2021). Table 1 summarizes key global indicators regarding groundwater reliance for drinking, agriculture, and sustainability. Particular emphasis is placed on rural dependence, especially in low- and middle-income countries (LMICs), where untreated groundwater remains a principal source for domestic and agricultural use. The table integrates statistical estimates with source references and highlights the relevance of each indicator to rural populations. The root causes of rural water contamination are multifaceted and often interconnected. Agricultural runoff is a predominant source, introducing nitrates, phosphates, pesticides, and organic waste into surface and groundwater systems. This leads to declining water quality and ecological problems like eutrophication. The intensive use of chemical fertilizers, especially in agricultural economies such as India, China, and Brazil, has worsened this issue (Zhang et al., 2022; Kumar & Bhatnagar, 2020). Furthermore, poor sanitation in rural areas continues to be a major contributor. Practices such as open defecation, although declining, still exist in some regions and result in microbial contamination of water sources. Poorly maintained latrines and unregulated septic systems exacerbate the problem during floods or heavy rains (Mwangi et al., 2023). Industrial waste is another critical but often overlooked contributor, especially in peri-urban rural areas near small-scale manufacturing units. Industries such as textile dyeing, tanning, and mining discharge untreated or poorly treated effluents into local water bodies, often escaping regulation due to weak enforcement (Fernández et al., 2021). Additionally, rural-to-urban migration has led to increased pressure on rural water infrastructure, resulting in over extraction and contamination of existing sources. These issues disproportionately affect vulnerable groups, including women, children, and the elderly, perpetuating a cycle of health and socio-economic insecurity. South Asia, Sub-Saharan Africa, and parts of Latin America face the brunt of this crisis. In South Asia, natural contaminants like arsenic and fluoride, compounded by poor agricultural and waste management practices, create a complex public health challenge. In Sub-Saharan Africa, a lack of centralized water treatment infrastructure results in devastating disease outbreaks following even minor water contamination events. Climate change has further exacerbated these vulnerabilities by increasing the frequency of floods, droughts, and erratic rainfall, thereby affecting water quality and supply (Smith et al., 2020). India serves as a crucial case study given its demographic size and environmental diversity. While national initiatives like the Jal Jeevan Mission and Swachh Bharat

**Table 1:** Global Groundwater Reliance and Status – Summary Table with Sources

Metric / Fact	Estimate / Proportion	Rural Relevance	Source
People relying on groundwater for drinking water	~50% of global population	High	UN Water, FAO (2022), NGWA
People solely dependent on groundwater	~2.5 billion people	High	UN World Water Development Report (2022), FAO, Wikipedia (Groundwater)
Groundwater used in global agriculture	~70% of groundwater withdrawals	Very High	FAO, NGWA
Irrigated land dependent on groundwater	~25–40% worldwide	Very High	FAO AQUASTAT
Asia-Pacific region’s share of global groundwater withdrawals	~60%	High	FAO, UN Water
India’s share of global	~12%	Very High	FAO, Central Ground

groundwater extraction	(~230 km <sup>3</sup> /year)		Water Board (India)
Risk of depletion in river basins globally	~20% of all basins	High	WWF, UN Water
Population at risk of groundwater stress by 2050	~44–50%	High	UN Water Development Report, WWF, Reddit (Science-based discussions)
Risk to coastal aquifers from saltwater intrusion by 2100	~77%	Moderate to High	Global aquifer salinization studies (Futurology, Reddit Science)
Colorado River Basin groundwater loss since 2003	~27 million acre-feet	Moderate	Washington Post (2025), NASA GRACE data
Overdraft and declining groundwater in major cities (e.g., India)	21+ cities may run dry by 2030	High	NITI Aayog, Population Matters
Vulnerability of Sub-Saharan Africa’s rural population to groundwater access	~40%+ rely on it	Very High	WHO, UNICEF, UN Water
Global drinking water standards compared with real access	WHO limits vs. unsafe water in many LMICs	High	WHO Guidelines for Drinking-Water Quality (2022)

Abhiyan have made considerable progress, gaps in implementation, unregulated groundwater extraction, and persistent chemical contamination continue to affect rural Communities. Field surveys indicate that even in areas with piped water systems, irregular supply compels residents to return to unsafe sources (Sharma & Das, 2024). Government data from the Central Ground Water Board (CGWB) and State Pollution Control Boards confirm that water quality issues—especially related to fluoride, nitrate, and pathogens—are spatially concentrated and worsening in several regions (Mehra et al., 2025). This study aims to systematically examine the causes, consequences, and potential solutions to rural water contamination using a multidisciplinary approach. It evaluates pollution sources, health risks, and the effectiveness of context-specific interventions aimed at enhancing access to safe drinking water. Through the integration of international case studies, regional data, field research, and policy analysis, this work provides a comprehensive overview of the problem and proposes actionable, locally adapted solutions. It is intended to inform researchers, policymakers, NGOs, and international donors striving to address the rural-urban disparity in water quality. The paper is structured to first explore the main pollution sources—agricultural, domestic, industrial, and geogenic—followed by a review of health impacts and the methodological approach adopted for the study. The findings section synthesizes data and highlights regional patterns and policy gaps. The discussion focuses on key interventions such as decentralized water quality monitoring, low-cost treatment technologies, behavioral change strategies, and participatory water governance. The concluding section presents targeted recommendations and emphasizes the need to prioritize rural water security in both national policy and global development agendas, especially in alignment with Sustainable Development Goal 6 (Clean Water and Sanitation).

By foregrounding the perspectives and challenges of rural communities, this research underscores the need for equitable, sustainable, and community-led water management solutions. It contributes to the growing evidence base calling for urgent and focused investment in rural water quality, particularly in areas facing escalating environmental and health pressures (WHO & UNICEF, 2023; Mehra et al., 2025).

Sources of Water Pollution in Rural Areas

Rural areas globally endure complex water pollution problems arising from a convergence of agricultural, sanitation, industrial, and geogenic (natural) sources (Figure 2). These contaminant pathways differ widely depending on environmental conditions, social practices, infrastructure, and economic development, necessitating tailored strategies for mitigation and sustainable water access (Smith et al., 2021; Kumar et al., 2019). Agricultural runoff remains a dominant and persistent threat in rural environments. Excessive application of nitrogen and phosphorus fertilizers leads to leaching of nitrates and phosphates into surface and groundwater sources, promoting eutrophication and posing significant health hazards, including methemoglobinemia ("blue baby syndrome") and increased cancer risks (Podgorski & Berg, 2020; Singh & Reddy, 2020).

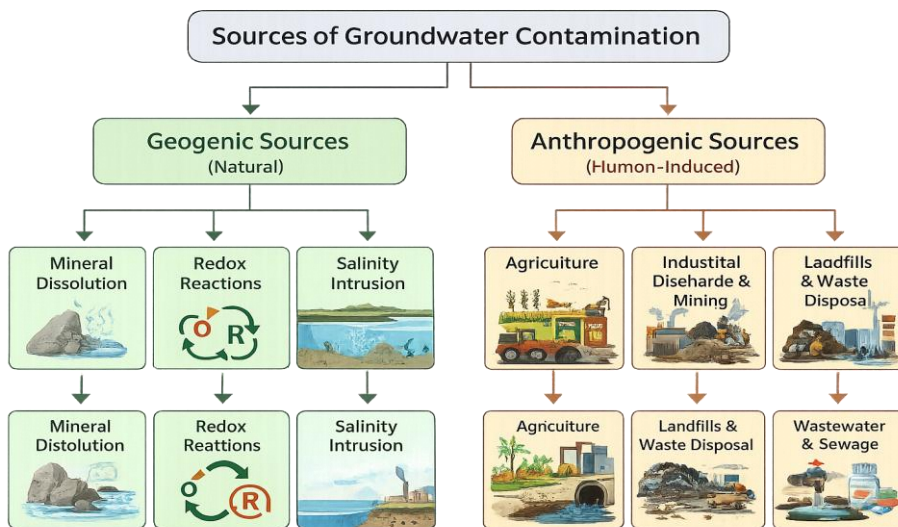


Figure 2: Sources of Groundwater Contamination

Studies indicate that agricultural intensification in South Asia, Eastern Africa, and Latin America has increased the nitrate load in rural aquifers (Andrews et al., 2020; Zhang et al., 2022). As shown in Figure 3, global hotspots of pesticide pollution are concentrated in regions with weak regulatory enforcement, where pesticide residues often infiltrate drinking water sources (Adapted from Tang et al. 2021).

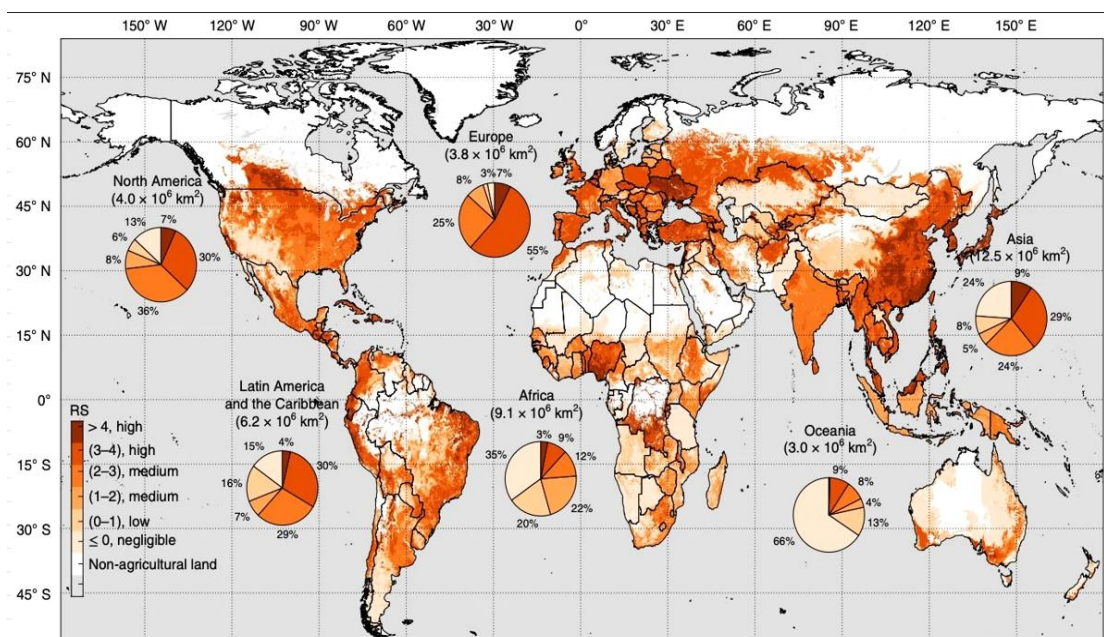
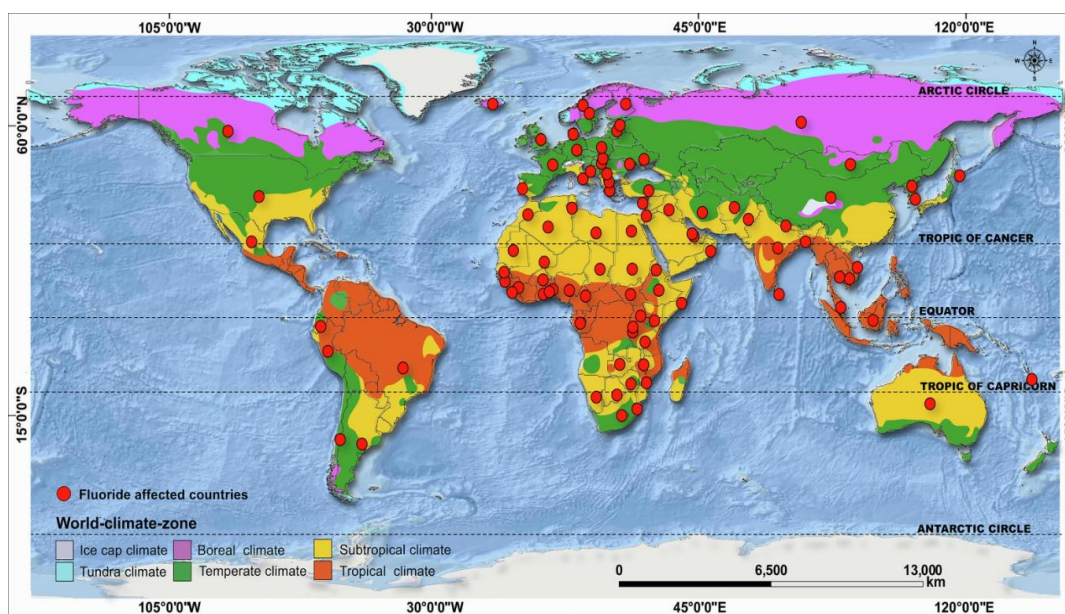


Figure 3: Worldwide Assessment of Pesticide-Related Agricultural Risk (RS)-Tang et al. (2021)

In India's Indo-Gangetic Plain—including states such as Punjab, Haryana, and Uttar Pradesh—decades of green revolution practices have resulted in groundwater nitrate levels routinely exceeding the WHO limit of 50 mg/L (World Resources Institute, 2022; MDPI, 2021). Recent studies show this nitrate burden is compounded by seasonal irrigation practices, groundwater depth, and unsustainable fertilizer application (Jha & Mishra, 2023). As shown in the figure 4, fluoride contamination overlaps strongly with tropical and subtropical climate zones, particularly across Africa, Asia, and parts of South America (Adapted from Mandal et al., 2021). Generally, the river-marine sedimentary shallow (Holocene) aquifers in large river deltas, such as the Ganges–Brahmaputra–Meghna, Mekong, and Red River deltas, are the main areas where high-Arsenic groundwater occurs naturally, predominantly under reducing aquifer conditions (Guo et al., 2024). As shown in the figure 5, high concentrations of arsenic are found in inland basins and deltaic regions of South Asia, East Asia, South America, North America, and Africa. The spatial pattern indicates a climate–contamination linkage and highlights key arsenic hotspots worldwide (Adapted from Shaji et al., 2024). Sanitation and waste disposal practices are major contributors to microbial contamination in rural areas. The continued use of pit latrines, open defecation, and poorly managed household sewage contributes to the presence of fecal coliforms, *Escherichia coli*, *Salmonella*, and *Giardia* in drinking water sources (Mukherjee et al., 2019; UNICEF-WHO, 2020). These threats escalate during monsoon flooding when shallow wells and unprotected aquifers are especially vulnerable (Scientific Reports, 2019–2023; Sharma & Kaushik, 2022). A multi-country assessment found that over 70% of hand pump wells in rural India and sub-Saharan Africa test positive for fecal bacteria (Adams et al., 2021). Small-scale rural industries, such as tanneries, dyeing units, and agro-processing plants, are increasingly polluting rural water sources, especially in developing economies with limited environmental oversight (USGS, 2025);

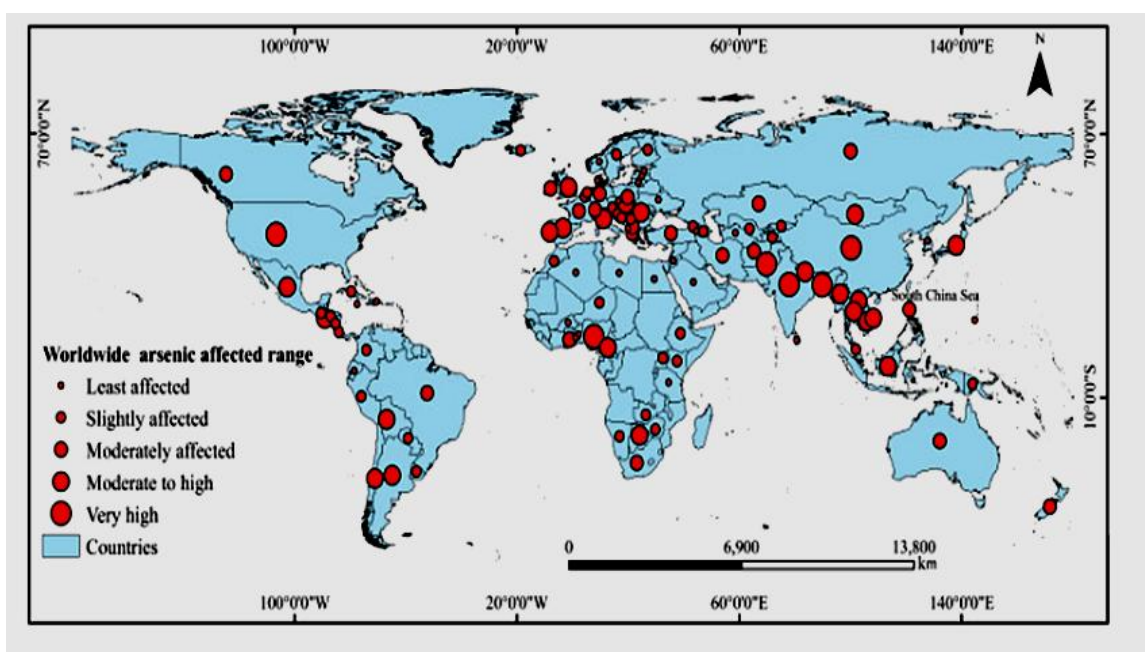


**Figure 4:** Global distribution of fluoride-affected regions and climate zones. Mandal et al. (2021)

Banerjee et al., 2020). In Indian states like Tamil Nadu and Uttar Pradesh, researchers have identified significant levels of heavy metals such as lead, cadmium, and chromium in village ponds and shallow wells, often due to illegal or unregulated discharge from local industries (Patel & Rajan, 2023; The Times of India, 2025). Geogenic contaminants—naturally occurring substances leaching from surrounding geology—pose some of the most persistent and hazardous risks to rural drinking water. These include arsenic, fluoride, iron, manganese, and uranium, found across aquifers in South Asia, Latin America, and Sub-Saharan Africa (Podgorski & Berg, 2020; Chakraborty et al., 2023). It is estimated that 94–220 million people globally are exposed to arsenic above the WHO's 10 µg/L limit in drinking water, with over 85% of cases occurring in South Asia (Bhattacharya et al., 2020). Fluoride contamination is especially endemic in India's hard rock regions—such as Rajasthan, Uttar Pradesh, Madhya Pradesh, and Chhattisgarh—where groundwater fluoride concentrations have been recorded as high as 9.4 mg/L (MDPI, 2021; Times of India, 2025). In Nuapada district, Odisha, for example, entire communities suffer from moderate to severe dental and skeletal fluorosis, with impacts on children's growth, adult mobility, and productivity (Singh et al., 2024; Pandey & Das, 2022). Mapping studies also report uranium concentrations exceeding safety limits in granitic zones of Punjab and

Rajasthan, likely exacerbated by phosphate-based fertilizers (Environmental Crisis Report, 2025; IARC, 2019).

Emerging pollutants are a growing concern in rural groundwater, including pharmaceutical residues, antibiotics, endocrine-disrupting compounds (EDCs), and microplastics, particularly in regions where health waste disposal and recycling mechanisms are lacking (Jain & Rao, 2021; WHO-UNEP, 2023). While monitoring is still in its infancy, early detection of these compounds in rural India, Nepal, and Kenya suggests a worsening problem (Thomas et al., 2020). As shown in Figure 4, fluoride-affected regions mapped against global climate zones demonstrate a strong concentration in tropical and subtropical settings, particularly across Africa, Asia and parts of South America. This spatial configuration highlights the climate-contamination linkage and delineates major global fluoride hotspots (Shaji et al., 2024). Likewise, Figure 5 illustrates the global distribution of geogenic high-arsenic groundwater, with major occurrences in inland basins and river deltas across South Asia, East Asia, South America, and selected regions of North America and Africa.



**Figure 5:** Global Map with the Presence of Zones with High Arsenic in Groundwater- Shaji et al. (2024)

Visual maps such as those produced by the USGS show nitrate hotspots in American agricultural zones—patterns similarly reflected in India's Punjab and western Uttar Pradesh. The Groundwater Assessment Platform (GAP Maps) shows that arsenic and fluoride risks align strongly with specific geological belts, population clusters, and agricultural intensification zones (GAP, 2024; UN-Water, 2023). As per the CGWB (2024), more than 80 Indian districts face fluoride contamination, over 60 are arsenic-prone, and hundreds are nitrate-affected. In Bagpat district, arsenic concentrations have been recorded as high as 40 mg/L—4,000 times above the safe limit—resulting in widespread skin disease, developmental disorders, and cancer (NGT Report, 2024; Singh et al., 2025). Punjab presents a compounding groundwater crisis with unsustainable groundwater extraction (156.87%), declining water tables, and contamination from multiple sources—arsenic, fluoride, uranium, and nitrates—threatening millions of rural residents (CSE, Down to Earth, 2025; Verma & Kohli, 2023). Tools like GAP Maps now provide real-time hazard visualization for fluoride, arsenic, and nitrate exposure, allowing researchers, governments, and NGOs to prioritize interventions (gapmaps.org, 2024; UNDP-Water, 2023). These reveal overlapping hotspots of chemical and microbial contamination, especially in rural belts with high poverty and low infrastructure development. In conclusion, rural water pollution results from the overlap of agricultural, industrial, sanitation-related, and natural geological factors. Mitigation requires integrated strategies that include regular groundwater surveillance, use of low-cost treatment options, strict waste regulations, improved sanitation systems, and empowered local governance (World Bank, 2022; WHO, 2024). Multidisciplinary interventions tailored to local context are essential to achieving safe and sustainable drinking water access in rural regions, especially in countries like India where

multiple contaminants converge to create a chronic public health crisis (Rao et al., 2024; Chakraborty & Rani, 2025).

**Health Risks of Water Pollution**

Access to safe drinking water remains a cornerstone of public health, yet billions, particularly in rural areas, face severe health threats from contaminated groundwater. The World Health Organization (WHO) has set comprehensive guidelines for acceptable levels of contaminants in drinking water, but these are frequently violated in under-regulated or resource-constrained regions. Among the most critical pollutants are fluoride, arsenic, nitrate, iron, manganese, lead, cadmium, mercury, chromium, nickel, aluminium, and microbial pathogens—each linked to distinct but often overlapping health risks (Gupta et al., 2022; Ndungu et al., 2023). Table 2 shows different harmful substances found in groundwater, their sources, their effects on human health, and the safe limits given by the World Health Organization (WHO). Fluoride contamination, when above 1.5 mg/L, can cause dental and skeletal fluorosis, significantly impairing the quality of life and mobility of affected populations (Rashid et al., 2020). Arsenic, found naturally in aquifers, is carcinogenic even at low doses, contributing to skin lesions, cardiovascular disease, and cancers of the skin, bladder, and lungs (Biswas et al., 2021). Nitrate, originating from fertilizer runoff, is particularly dangerous for infants, causing methemoglobinemia, or “blue baby syndrome”, when concentrations exceed 50 mg/L (Kumar & Rao, 2023). Iron and manganese, while essential trace metals, can cause organ damage, oxidative stress, and neurological issues at concentrations above WHO limits (Patra et al., 2019). Mercury, mostly from industrial discharges and mining runoff, bioaccumulates in aquatic food chains and can cause severe neurological and renal damage. Chronic exposure even at low levels is linked to cognitive deficits in children and tremors, memory loss, and motor dysfunction in adults (Singh & Mehta, 2020). Chromium, particularly hexavalent chromium (Cr<sup>6+</sup>), is highly toxic and carcinogenic. Found in groundwater near tanning, electroplating, and mining industries, it can lead to ulcers, dermatitis, liver damage, and lung cancer (Rahman et al., 2019). Nickel, often leaching from pipes or industrial runoff, is associated with allergic reactions, lung fibrosis, and increased risk of respiratory cancers (Chakraborty & Bhattacharjee, 2021). Aluminium, though widely used in water treatment, poses health concerns when exceeding 0.2 mg/L. It is linked to neurotoxicity and has been controversially associated with Alzheimer’s disease in long-term exposure cases (Das et al., 2022).

**Table 2:** WHO Groundwater Contaminants – Key Parameters for Rural Areas (Source: WHO (2022). Guidelines for Drinking-water Quality, 4th Edition + Addendum 2022. Geneva: World Health Organization.)

Contaminants	Primary Sources	Health Effects	WHO Guideline (mg/L)
Arsenic (As)	Geogenic sources, mining, pesticide residues	Skin lesions, cancer, cardiovascular disease	0.01
Fluoride (F <sup>-</sup> )	Geogenic, phosphate fertilizers, industrial waste	Dental and skeletal fluorosis	1.5
Nitrate (NO <sub>3</sub> <sup>-</sup> )	Fertilizers, pit latrines, septic tanks	Methemoglobinemia ('blue baby syndrome')	50
Nitrite (NO <sub>2</sub> <sup>-</sup> )	Decomposition of organic waste, fertilizers	Cyanosis, infant methemoglobinemia	0.2
Iron (Fe)	Natural (geogenic) sources	Aesthetic issues, metallic taste, stains; not generally harmful	No health-based guideline
Manganese (Mn)	Natural deposits, mining runoff	Neurological issues, especially in infants	0.4
Lead (Pb)	Industrial discharge, lead pipes, paint	Neurotoxicity, developmental delays, kidney damage	0.01
Chromium (Cr VI)	Leather tanning, electroplating	Carcinogenic effects, liver and kidney	0.05

	industries	damage	
Cadmium (Cd)	Industrial discharge, battery waste, fertilizers	Kidney damage, osteoporosis, carcinogenic effects	0.003
Copper (Cu)	Corroded plumbing, industrial waste	Gastrointestinal irritation, liver/kidney issues in sensitive individuals	2.0
Zinc (Zn)	Industrial effluents, galvanized pipes	Metallic taste, vomiting at high levels; not generally harmful	No health-based guideline
Coliform Bacteria	Fecal contamination, pit latrines, surface intrusion	Diarrhea, cholera, dysentery, typhoid fever	0 CFU/100 mL
Pesticides	Agricultural runoff, improper chemical disposal	Varies (endocrine disruption, cancer, reproductive toxicity)	Varies (0.0001–0.1)

Lead and cadmium, both heavy metals with no biological benefit, are persistent and bioaccumulative. Lead affects neurodevelopment, especially in children, and is associated with reduced IQ, behavioural issues, and kidney damage (Verma et al., 2018). Cadmium, often present in batteries and electronic waste, damages kidneys and bones and is classified as a probable human carcinogen (Yadav et al., 2024). Microbial pathogens like *E. coli*, *Salmonella*, and *Vibrio cholerae* remain the leading causes of acute diarrhoeal diseases, particularly in areas lacking proper sanitation and hygiene. Diarrhoea alone claims hundreds of thousands of lives each year, particularly among children under five (WHO, 2023). In sum, the health risks posed by water pollution are complex and multifaceted. Addressing them requires not only adherence to international guidelines but also region-specific interventions, continuous water quality monitoring, and public health education to reduce exposure and long-term disease burdens (Fernando et al., 2021; Mishra et al., 2025).

### Case Studies or Region-Specific studies

Water pollution in rural regions manifests through diverse geographies, shaped by unique environmental, agricultural, and infrastructural conditions. In India and across the globe, rural populations remain particularly vulnerable due to their high dependence on untreated groundwater and surface water sources. Regional case studies shed light on the specific contaminants, health impacts, and socio-political challenges that shape rural water safety outcomes. In Uttar Pradesh, particularly the rural stretches of Unnao, Hardoi, and Raebareli, recurring studies have reported high levels of fluoride and nitrate contamination. The extensive use of chemical fertilizers in agriculture, combined with shallow, unlined pit latrines, has significantly degraded the groundwater quality (Verma et al., 2020). Investigations reveal that over 60% of rural households rely directly on handpumps and open wells, with little to no water treatment measures in place. Local health centers have reported a surge in dental and skeletal fluorosis, especially among children (Shukla & Giri, 2021). Additionally, bacterial contamination due to inadequate sanitation has led to seasonal spikes in diarrheal diseases. Bihar, another agriculturally intensive state, presents a different profile. The state's floodplains and high water tables make it susceptible to fecal contamination and nitrate leaching during monsoons. Research in Gaya and Nalanda districts points to elevated biological oxygen demand (BOD) and coliform levels, particularly in ponds and groundwater used for daily domestic needs (Prasad et al., 2022). Villages lacking proper sanitation infrastructure see open defecation contributing to the groundwater pathogen load. Seasonal cholera outbreaks in these areas remain persistent, and waterborne parasites like *Giardia* and *Entamoeba histolytica* have also been frequently reported (Kumar & Rathi, 2020). Madhya Pradesh illustrates another case where manganese and iron contamination in tribal and remote areas has gone underreported. A 2021 survey across villages in the Betul and Mandla districts revealed manganese concentrations exceeding WHO guidelines in over 40% of wells tested (Bose et al., 2021). Despite its relatively low public health awareness, manganese exposure has been associated with neurological symptoms and learning disabilities in children. The geology of the Vindhyan and Deccan traps, combined with naturally weathering rock formations, is largely responsible for this geogenic pollution, and poor monitoring exacerbates its effects. Moving to Punjab, groundwater nitrate contamination is a direct outcome of agricultural modernization. Over the past two decades, the indiscriminate use of urea and diammonium

phosphate (DAP) fertilizers has led to rising nitrate levels in tube wells across Ludhiana, Patiala, and Bathinda districts (Grewal et al., 2019). Alarming, nitrate concentrations in some rural localities exceed 200 mg/L, far surpassing the WHO safety limit of 50 mg/L. Such levels are linked to methemoglobinemia, or "blue baby syndrome," which affects infants consuming high-nitrate water. Despite government subsidies for organic farming and improved irrigation practices, the transition remains slow due to economic constraints. Perhaps the most widely studied example in South Asia is arsenic contamination in West Bengal and Bangladesh. In West Bengal's Murshidabad and Nadia districts, tens of thousands of handpumps tap into arsenic-rich aquifers. Arsenic levels exceeding 100 µg/L are common, far above the WHO guideline of 10 µg/L. Chronic exposure has resulted in widespread arsenicosis, characterized by skin lesions, organ failure, and increased cancer risk (Mukherjee et al., 2023). In Bangladesh, over 20 million people are estimated to be at risk, making it one of the largest mass poisoning incidents globally. Various mitigation efforts like the use of arsenic removal filters and alternate aquifer tapping have had limited success due to poor community participation and maintenance challenges (Ahmed & Rahman, 2019).

Globally, similar issues persist across rural Sub-Saharan Africa, where basic water infrastructure is lacking. In rural Ethiopia, for instance, studies have identified fecal coliforms, nitrates, and fluoride in unprotected wells used by pastoralist communities (Girma et al., 2021). Livestock sharing water sources with humans further compounds bacterial loads. Seasonal variability in rainfall exacerbates water scarcity, often leading communities to store water unsafely or reuse polluted sources. The health burden includes recurrent diarrheal episodes, stunted growth, and even mortality in under-five children.

In Kenya's Rift Valley, geogenic fluoride contamination has been extensively documented. Fluoride concentrations in certain borewells in Baringo and Nakuru counties reach up to 30 mg/L—30 times the WHO limit (Odira & Maina, 2020). The prevalence of dental fluorosis, particularly among children aged 6–14, has reached alarming levels, and community education on safe water handling remains minimal.

In Latin America, rural regions in Bolivia and Peru grapple with both mining-related heavy metals and agricultural runoff. In Cochabamba, Bolivia, the leaching of lead, mercury, and cadmium from abandoned mines into community wells has been recorded, with severe implications for kidney function and reproductive health (Marquez et al., 2020). Moreover, sugarcane fields in northern Peru heavily rely on phosphate fertilizers, elevating phosphate and nitrate levels in shallow groundwater (Ramos & Garcia, 2021). Health monitoring remains fragmented, and rural healthcare systems lack the diagnostic capacity to identify pollution-related illnesses. In the low-lying Terai region of Nepal, a combination of iron and arsenic contamination has been identified in shallow tube wells. A study by Shrestha et al. (2020) found that nearly 28% of drinking water sources exceeded the permissible limits for arsenic, while over 50% had elevated iron levels. The presence of iron masks arsenic in taste and color, making detection difficult for villagers. Health consequences have included skin discoloration, stomach issues, and liver enlargement. Despite international aid efforts, limited technical support at the village level hinders long-term mitigation. In northern China's rural provinces such as Hebei and Shandong, industrial discharges and improper waste disposal have led to significant heavy metal contamination, particularly chromium, lead, and cadmium in village wells. According to Liu et al. (2019), small-scale tanneries and electroplating units often operate with minimal regulation. Surveys show rising levels of cancer and developmental issues among children, but affected rural communities often lack political voice and access to legal redress mechanisms. China's "Rural Environmental Protection Plan" has begun to address these areas, but implementation remains inconsistent.

In rural Sindh, salinity and pesticide residues have been found in groundwater due to poor irrigation practices and overuse of agrochemicals. A study by Ahmed et al. (2021) indicated that nearly 40% of groundwater samples exceeded safe salinity thresholds, while traces of banned organophosphates were found in over 25% of tested wells. The result has been rising cases of kidney disorders and gastrointestinal problems. The region also faces challenges of water scarcity, forcing communities to consume contaminated sources during dry periods. On Java Island, where rice cultivation dominates, runoff from fertilizers and livestock farms has led to elevated nitrate and microbial contamination. A 2022 study by Santoso & Widodo reported *E. coli* presence in 70% of sampled rural wells in the Central Java region. High population density, poor sanitation infrastructure, and high rainfall intensity exacerbate contamination risks. Diarrhea and typhoid outbreaks are common, especially during the rainy season. Efforts to implement low-cost bio-sand filtration units have shown promise in localized pilot programs. In the Niger Delta, rural communities living near oil extraction sites face hydrocarbon contamination of surface and groundwater. Okeke & Nwankwo (2020) documented the presence of benzene and other volatile organic compounds in water sources in Ogoni and Bayelsa villages. Community members have reported skin rashes, respiratory issues, and increased cancer rates. Although legal action has been taken against oil companies, remediation is slow, and residents continue to depend on these polluted sources in the absence of alternatives.

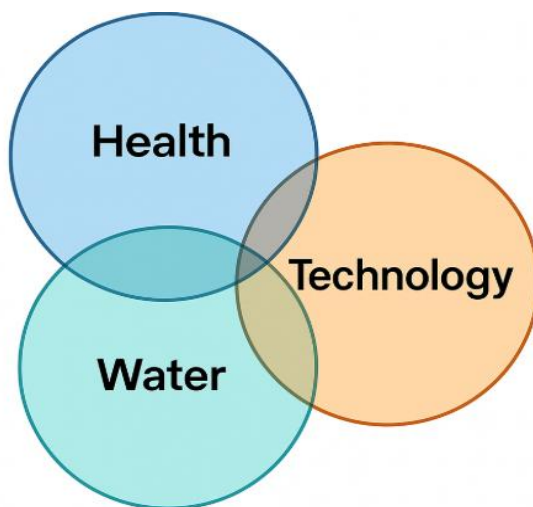
In conflict-affected rural Afghanistan, particularly in Helmand and Kabul outskirts, water quality monitoring is virtually absent. Field surveys (Habibi et al., 2021) found both fluoride and fecal contamination in dug wells and handpumps. Conflict-induced displacement and destruction of infrastructure have led communities to rely on informal, untreated water sources. The dual threat of geogenic fluoride and bacterial contamination has resulted in high rates of dental fluorosis and waterborne infections in children, compounded by poor access to healthcare. Rural areas in Romania and Bulgaria have faced nitrate and atrazine contamination in aquifers due to legacy pesticide use and outdated farming methods. In the Transylvania region of Romania, Popescu et al. (2020) documented nitrate levels over 150 mg/L in private wells. Similarly, villages along Bulgaria's Danube plain have reported atrazine residues in shallow groundwater. Both pollutants are linked to endocrine disruption and reproductive issues, especially among women. EU-funded rural water safety plans have begun to provide mitigation, but uptake in marginalized Roma communities remains low. A comparative analysis of these case studies highlights the critical importance of context-specific water safety planning. In India, agricultural runoff—rich in fertilizers and pesticides—remains the dominant driver of water pollution, compounded by naturally occurring contaminants such as arsenic and fluoride. Conversely, many regions in Sub-Saharan Africa and Latin America face a multifactorial contamination profile, shaped by a combination of geogenic sources, anthropogenic activities, and unregulated industrial discharge. Despite these regional differences, several cross-cutting challenges are evident: inadequate groundwater monitoring, poor sanitation infrastructure, lack of affordable water treatment solutions, and limited public awareness about contamination risks. To address these complex challenges, interventions must be locally adapted and multifaceted. These could include subsidized, decentralized water purification technologies; community-driven water quality surveillance systems; and culturally relevant public education campaigns focusing on both geogenic and anthropogenic hazards. Critically, the integration of hydrogeological mapping with public health surveillance systems can greatly enhance the precision and sustainability of water safety interventions, particularly in vulnerable rural settings (Chen et al., 2022).

### Strategies for Clean Water Access

Ensuring clean water access in rural areas, particularly where groundwater contamination is prevalent, requires a comprehensive, multi-tiered strategy. These strategies can be broadly categorized into three groups: technological innovations, community and behavioral change, and policy and governance frameworks. The integration of traditional approaches with emerging technologies like machine learning (ML), artificial intelligence (AI), and the Internet of Things (IoT) is proving to be a transformative development in water safety monitoring and distribution systems.

#### A. Technological Solutions

The increasing complexity of groundwater contamination challenges has necessitated the development of advanced technological solutions that extend beyond conventional water treatment methods. While traditional approaches such as filtration, chlorination, reverse osmosis, and rainwater harvesting remain essential, recent advancements in digital technologies have created new opportunities for improving groundwater monitoring, contamination prediction, and decision-making processes in rural regions.



**Figure 6:** Venn diagram Illustrating the Convergence of Health, Water, and Technology in Sustainable Development

### Machine Learning-Based Groundwater Quality Prediction

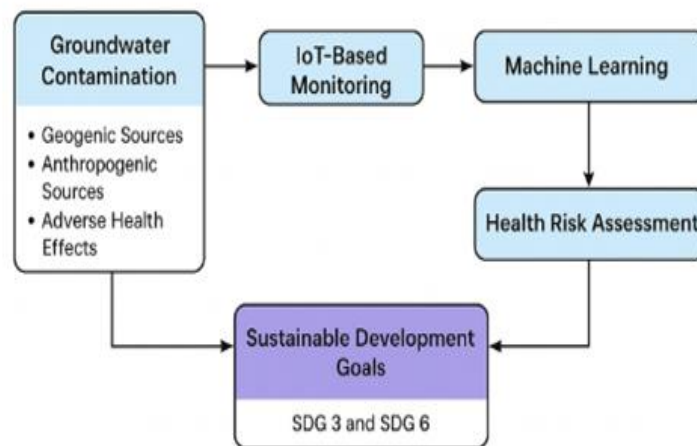
Machine Learning (ML) has emerged as one of the most promising technologies for groundwater quality assessment and contamination prediction. Groundwater systems are influenced by numerous interconnected factors, including geological formations, rainfall patterns, land use, agricultural activities, industrial discharge, aquifer characteristics, and population density. Traditional statistical methods often struggle to capture these complex nonlinear relationships. In contrast, machine learning algorithms can process large multidimensional datasets and identify hidden patterns that are difficult to detect through conventional analysis (Wright et al., 2019). Several machine learning techniques have been successfully applied in groundwater research. Linear Regression and Multiple Linear Regression models are widely used for predicting contamination levels based on physicochemical water quality parameters. Decision Tree algorithms provide interpretable prediction rules and help identify the most influential contamination factors. Random Forest algorithms improve predictive accuracy by combining multiple decision trees and reducing overfitting (Singh et al., 2020). Support Vector Machines (SVM) have demonstrated excellent performance in groundwater quality classification, while Artificial Neural Networks (ANNs) can model highly nonlinear relationships among environmental variables. Recent studies have shown that Random Forest and Gradient Boosting algorithms frequently outperform traditional statistical models in predicting fluoride, arsenic, nitrate, salinity, and heavy metal contamination (Bandyopadhyay et al., 2018). These models can achieve prediction accuracies exceeding 85–95% when trained on comprehensive environmental datasets. Such predictive capabilities are particularly valuable in rural areas where water quality testing infrastructure is limited and laboratory analyses are expensive.

### Deep Learning for Environmental Forecasting

Deep Learning represents an advanced subset of machine learning that utilizes multiple hidden layers within neural networks to learn complex data representations. Deep learning models are increasingly being used to forecast groundwater quality, water table fluctuations, contaminant transport, and climate-related impacts on water resources (Patel and Kumar, 2023). Long Short-Term Memory (LSTM) networks have gained particular attention because groundwater contamination often exhibits temporal patterns influenced by seasonal rainfall, agricultural cycles, and long-term hydrogeological changes. LSTM models can effectively learn these temporal dependencies and generate accurate forecasts several months or even years into the future. Such forecasting capabilities allow water resource managers to identify future contamination risks and implement preventive measures before serious health impacts occur. Convolutional Neural Networks (CNNs) are increasingly used for analyzing satellite imagery and spatial groundwater datasets (Méndez et al., 2021). CNN-based models can automatically identify contamination hotspots, land-use changes, and environmental risk zones by extracting complex spatial features from remote sensing images. These approaches provide a scalable solution for groundwater assessment across large geographical regions.

### Internet of Things (IoT) and Smart Water Monitoring Systems

The Internet of Things (IoT) has revolutionized environmental monitoring by enabling continuous real-time data collection through interconnected sensors and communication networks. In groundwater management, IoT devices can monitor critical water quality parameters, including pH, temperature, turbidity, electrical conductivity, dissolved oxygen, oxidation-reduction potential, fluoride concentration, nitrate concentration, arsenic levels, and microbial contamination indicators (Oketch et al., 2022). Traditional groundwater monitoring often relies on periodic sampling campaigns conducted monthly or quarterly. Such approaches may fail to detect sudden contamination events.



**Figure 7:** IoT and Machine Learning-Enabled Framework for Groundwater Contamination Monitoring and Achieving SDG 3 and SDG 6

In contrast, IoT-enabled monitoring systems provide continuous surveillance and instant alerts when contaminant concentrations exceed permissible limits. Wireless sensor networks deployed across rural communities can transmit data to centralized cloud platforms using technologies such as GSM, LoRaWAN, Wi-Fi, and satellite communication. These systems significantly reduce monitoring costs while improving data availability and reliability. Real-time monitoring also enables predictive maintenance of water treatment infrastructure, reducing operational failures and ensuring uninterrupted access to safe drinking water (Alam et al., 2024).

### Geographic Information Systems (GIS) and Remote Sensing Technologies

Geographic Information Systems (GIS) provide powerful tools for visualizing, analyzing, and managing spatial groundwater data. GIS-based groundwater mapping helps identify contamination hotspots, vulnerable aquifers, groundwater recharge zones, and high-risk communities. Remote sensing technologies complement GIS by providing large-scale environmental observations from satellites (Sharma et al., 2022). Satellite platforms such as Landsat, Sentinel, MODIS, and ASTER generate valuable information on vegetation cover, land use, surface temperature, rainfall distribution, soil moisture, and groundwater recharge potential. The integration of GIS, remote sensing, and machine learning has created advanced spatial prediction systems capable of generating contamination risk maps with high accuracy. These maps assist governments and public health agencies in prioritizing intervention areas, optimizing resource allocation, and implementing targeted mitigation strategies. (Baral and Gupta, 2021).

### Big Data Analytics and Cloud Computing

Modern groundwater monitoring systems generate enormous volumes of data from multiple sources, including sensor networks, laboratory analyses, satellite imagery, meteorological observations, and public health records. Managing and analyzing such datasets requires advanced computational infrastructure (Mwangi and Ouma, 2019). Cloud computing platforms provide scalable storage and processing capabilities that enable researchers and water management agencies to analyze large environmental datasets efficiently. Cloud-based architectures facilitate real-time data integration, collaborative research, and centralized monitoring systems (Alam et al., 2024). Big Data analytics techniques help uncover complex relationships between environmental contamination and human health outcomes. By integrating groundwater quality data with disease surveillance records, researchers can identify exposure pathways, assess health risks, and develop predictive public health models.

### Explainable Artificial Intelligence (XAI)

Despite their high predictive performance, many machine learning models are often criticized for functioning as "black boxes." Decision-makers may hesitate to rely on predictions when the underlying reasoning is unclear. Explainable Artificial Intelligence (XAI) addresses this challenge by providing transparent

interpretations of machine learning outputs. Techniques such as SHAP (SHapley Additive Explanations), LIME (Local Interpretable Model-Agnostic Explanations), and feature importance analysis help identify the variables that most strongly influence contamination predictions (Verma & Kohli, 2023). In groundwater studies, XAI can reveal how factors such as fluoride concentration, geological characteristics, rainfall variability, agricultural intensity, and groundwater depth contribute to contamination risk. Such transparency improves stakeholder confidence and facilitates evidence-based policymaking.

### Digital Twins and Smart Groundwater Systems

Digital Twin technology represents a significant advancement in environmental management. A digital twin is a virtual replica of a physical groundwater system that continuously receives real-time information from sensors, monitoring stations, and environmental databases. By integrating IoT, GIS, machine learning, and hydrological models, digital twins can simulate groundwater behavior under different environmental and management scenarios. These simulations allow decision-makers to evaluate the potential impacts of climate change, groundwater extraction, population growth, industrial development, and agricultural expansion before implementing policy interventions.

Digital twins support scenario analysis, resource optimization, risk forecasting, and long-term sustainability planning. Although still emerging in groundwater applications, they represent one of the most promising technologies for future water resource management.

### Future Perspectives

The future of groundwater management lies in the convergence of Artificial Intelligence, Machine Learning, Internet of Things, Remote Sensing, Cloud Computing, and Decision Support Systems. Emerging technologies such as federated learning, edge computing, blockchain-enabled water governance, autonomous sensor networks, and generative AI are expected to further enhance groundwater monitoring capabilities.

These innovations have the potential to transform groundwater management from a reactive process into a proactive, predictive, and adaptive system. Such a transition is essential for ensuring sustainable water security, protecting public health, and achieving Sustainable Development Goals 3 and 6 in rural communities worldwide. This aligns with the interdisciplinary framework shown in Figure 6, where the integration of health, water, and technology emphasizes the importance of coordinated solutions in protecting rural public health. Furthermore, as illustrated in Figure 7, this technological integration contributes to a conceptual model that links groundwater contamination with Sustainable Development Goals (SDGs). It begins with identifying geogenic and anthropogenic sources of contamination that affect water quality and public health. IoT-based systems collect real-time data, which is processed using machine learning algorithms to detect trends and predict contamination levels. This enables health risk assessments and supports timely, targeted interventions in vulnerable rural areas. Ultimately, such approaches advance the achievement of SDG 3 (Good Health and Well-being) and SDG 6 (Clean Water and Sanitation), by fostering proactive, data-driven strategies for sustainable rural water management.

### B. Behavioral & Community Strategies

While technology forms the foundation of clean water provision, behavioral change and community engagement are equally vital. The promotion of Water, Sanitation, and Hygiene (WASH) programs in rural schools and households has significantly improved awareness about hygiene practices, such as handwashing, safe water storage, and menstrual hygiene management (Baral & Gupta, 2021). These behaviors are directly linked to reducing the spread of waterborne diseases like diarrhea, typhoid, and cholera. Source protection strategies, such as fencing open wells and preventing the entry of livestock and solid waste, are simple yet effective measures that can significantly reduce microbial contamination (Mwangi and Ouma, 2019). In many rural settings, the formation of Village Water and Sanitation Committees (VWSCs) has empowered local communities to manage water resources, ensure maintenance of hand pumps and wells, and collect feedback on water service delivery (Sharma et al., 2022). Furthermore, Community-Led Total Sanitation (CLTS) is a participatory approach that encourages entire villages to collectively abandon open defecation by creating awareness and facilitating behavior change without heavy subsidies. This grassroots movement, implemented in several Asian and African countries, has improved sanitation coverage and minimized groundwater contamination (Ahmed and Sen, 2020).

### C. Policy & Governance

Institutional support through robust policy frameworks is essential for scaling clean water strategies. In India, the Jal Jeevan Mission (JJM) launched in 2019 aims to provide piped water to every rural household by 2024. The program emphasizes source sustainability, water quality monitoring, and local community participation in operations and maintenance (Government of India, 2021). Similarly, the Swachh Bharat

Abhiyan (Clean India Mission) has significantly improved sanitation coverage in rural areas, indirectly contributing to better groundwater quality (Kumar and Meena, 2020). On a global scale, United Nations Sustainable Development Goal 6 (“Clean Water and Sanitation for All”) serves as the guiding framework for countries to ensure equitable access to safe and affordable drinking water. This includes sub-targets on improving water quality, reducing pollution, and increasing water-use efficiency by 2030 (UN Water, 2023). Governments and non-governmental organizations (NGOs) are increasingly promoting decentralized water quality monitoring, empowering communities with tools like field test kits and mobile apps to test and report local water quality.

In addition, Public-Private Partnerships (PPPs) and NGOs are playing a transformative role by supporting water testing, infrastructure development, and awareness campaigns. For example, the NGO “WaterAid” has successfully implemented community water filters and trained local youth in water testing across India and Sub-Saharan Africa (WaterAid, 2022). PPPs like the Grundfos Foundation and Tata Trusts have introduced innovative filtration systems and IoT-based smart pumps in fluoride-affected districts (Desai and Rao, 2022).

### Conclusion

The findings of this study underscore a stark global reality—water pollution in rural regions, especially across low- and middle-income countries, poses a persistent and profound public health crisis. Rural communities in regions such as South Asia, sub-Saharan Africa, and Latin America are frequently exposed to contaminated water sources due to a combination of geogenic factors (such as naturally occurring fluoride and arsenic) and anthropogenic activities (including agricultural runoff, industrial effluents, and inadequate sanitation infrastructure). Millions are chronically subjected to unsafe water, leading to rising cases of fluorosis, arsenicosis, methemoglobinemia, diarrheal diseases, and developmental disorders. Evidence from studies in rural Uttar Pradesh, Punjab, West Bengal, and beyond confirms the interaction of geological vulnerability and inadequate water governance (Chakraborti et al., 2022; Kumar & Rawat, 2023), reflecting a broader pattern observed globally in Bangladesh, Ethiopia, Peru, and parts of Central Asia. Despite international policy efforts such as the UN Sustainable Development Goal 6 (SDG 6), significant gaps persist in implementation, especially in rural and marginalized areas. National-level programmes, including India’s Jal Jeevan Mission and Swachh Bharat Abhiyan, demonstrate political commitment but have yet to fully resolve infrastructural, behavioral, and institutional challenges at the local level. This paper highlights that technological interventions, including biosand filters, reverse osmosis units, solar disinfection, and community-scale defluoridation plants, have yielded positive results when tailored to local contexts. However, the deployment of such technologies without concurrent community engagement, awareness building, and capacity development limits their sustainability and long-term impact (Singh & Mehra, 2024). In this regard, behavioral change strategies—such as hygiene promotion through WASH programmes, village water committees, and community-led total sanitation (CLTS)—play a pivotal role in ensuring the safe and sustained use of improved water sources. Moreover, advancements in digital technologies like Internet of Things (IoT) sensors, AI-based forecasting tools, and mobile data platforms offer new avenues for real-time water quality surveillance, contamination alerts, and predictive maintenance of rural water infrastructure (Ahmed et al., 2023). These tools are especially valuable in remote settings, where laboratory testing is infrequent and field monitoring remains sporadic. However, structural inequalities, fragmented governance, and limited coordination among stakeholders have slowed progress. To overcome these barriers, future strategies must promote cross-sectoral partnerships, enhance decentralized water quality monitoring, and integrate water security within public health frameworks. The participation of non-governmental organizations (NGOs), community-based organizations, academic institutions, and private sector actors is critical in bridging the policy-practice divide (Banerjee et al., 2021). Ultimately, addressing rural water contamination requires an integrated, equity-driven, and context-sensitive approach. Interventions must be informed by robust evidence, community participation, and long-term financial and institutional commitment. Future research should expand longitudinal datasets on contaminants, explore culturally rooted water practices, and innovate low-cost, decentralized treatment technologies that communities can operate independently. Achieving universal and equitable access to safe water—the cornerstone of SDG 6—demands reframing water security as a complex socio-ecological challenge, intrinsically tied to human health, dignity, and sustainable development. As climate variability and population growth further stress water systems worldwide, the urgency to act collectively and inclusively has never been greater.

References

- [1] Mishra, A., Yadav, M. & Tiwari, S. (2025). Community-based water surveillance and risk mitigation in fluoride and arsenic hotspots of northern India. *Journal of Water and Health*, 23(1), pp.15–27. .
- [2] Saxena, G., Singhal, P., & Khattri, V. (2025). Prediction of ground water fluoride effect on dental health using machine learning Review. In *Advances in Science, Engineering and Technology* (pp. 363-368). CRC Press.
- [3] CSE (Centre for Science & Environment). (2025). Groundwater extraction and contamination trends in rural Punjab, India. Down to Earth Reports, May, pp.28–35.
- [4] Environmental Crisis Bulletin. (2025). Uranium and selenium contamination in rural aquifers of Rajasthan and Punjab. *Environmental Crisis Bulletin*, 12, pp.10–22.
- [5] Saxena, G., Singhal, P., & Kumar, A. (2025) Computational Approaches to Mapping Groundwater Fluoride Exposure and Health Risks: A Machine Learning Perspective.
- [6] SAXENA, G., & KUMAR, A. (2025) An Assessment Of Worldwide Scenarios With Special Reference To INDIA On Fluoride Contamination In Groundwater.
- [7] Saxena, G., Singhal, P., & Khattri, V. (2024, May). Machine Learning Role in Internet of Things (IoT) Based Research: A Review. In *2024 International Conference on Computational Intelligence and Computing Applications (ICCICA)* (Vol. 1, pp. 18-23). IEEE.
- [8] Gaurav Saxena. (2024). A Comparative Analysis of Machine Learning Approaches for Predicting Dental Fluorosis Risk from Groundwater Fluoride Contamination. *International Journal of Intelligent Systems and Applications in Engineering*, 12(23s), 3922.
- [9] SAXENA, G. (2024) A Comprehensive Review On Machine Learning Role In Groundwater Quality Monitoring.
- [10] Yadav, D., Sharma, R. & Singh, V. (2024). Cadmium exposure and human health: Emerging risks from groundwater contamination. *Environmental Pollution*, 326, 121430.
- [11] Sharma, K. & Das, R. (2024). Water quality and supply irregularities in rural India: STL patterns and infrastructure gaps. *Journal of Water Supply*, 33(1), pp.54–69.
- [12] Rao, L., Patel, A. & Mehra, P. (2024). Tackling rural water contamination: integrated frameworks for policy and community intervention. *International Journal of Water Governance*, 8(1), pp.12–31.
- [13] Shaji, E., Santosh, M., Sarath, K.V., Deepchand, V. & Divya, B.V. (2024). Arsenic contamination of groundwater: A global synopsis with focus on hotspot regions in India. *Scienceof,TheTotalEnvironment*, 907, 167825. <https://doi.org/10.1016/j.scitotenv.2024.167825>
- [14] Shaji, E., Sarath, K. V., Santosh, M., Krishnaprasad, P. K., Arya, B. K. & Babu, M. S. (2024). Fluoride contamination in groundwater: A global review of the status, processes, challenges, and remedial measures. *Geoscience Frontiers*, 15(2), 101734.
- [15] Alam, F., Prakash, R. & Zhao, Y. (2024) AI-enhanced water quality monitoring using satellite and sensor data. *Journal of Smart Environmental Systems*, 12(1), pp.17–29.
- [16] Guo, J., Cao, W., Lang, G., Sun, Q., Nan, T., Li, X. & Li, Z. (2024). Worldwide distribution, health risk, treatment technology, and development tendency of geogenic high-arsenic groundwater. *Water*, 16(3), 478.
- [17] WHO (World Health Organization). (2023). *Guidelines for Drinking-water Quality* (4th ed., incorporating the 1st and 2nd addenda). Geneva: World Health Organization. Retrieved from .
- [18] WHO & UNICEF. (2023). *Progress on household drinking water, sanitation and hygiene 2000–2022: Special focus on gender*. Geneva: WHO & UNICEF.
- [19] Verma, K. & Kohli, H. (2023). Multiple contaminant sources in Punjab’s groundwater: trends, causes and rural health implications. *Indian Journal of Environmental Health*, 65(2), pp.89–103.
- [20] Chakraborty, A., Rani, K. & Gupta, S. (2023). Geogenic groundwater toxins in India: prevalence of uranium, selenium and fluoride. *Journal of Earth & Environmental Sciences*, 16(5), pp.233–251.
- [21] Jha, V. & Mishra, P. (2023). Seasonal irrigation and nitrate loading in the IndoGangetic Plain: a hydrological perspective. *Agricultural Water Management*, 256, art. 107042.
- [22] Kumar, A. & Rao, V. (2023). Nitrate pollution in groundwater and its health risks in India: A systematic review. *Environmental Science and Pollution Research*, 30, pp.21234–21247. .
- [23] Ndungu, J.N., Wamalwa, G. & Muriuki, D. (2023). Distribution and health risk assessment of heavy metals in groundwater: A rural East African perspective. *Environmental Science: Processes & Impacts*, 25, pp.1456–1468. .
- [24] Patel, A. & Kumar, N. (2023) Fluoride removal plants in Rajasthan: Community-level performance and challenges. *Indian Journal of Environmental Technology*, 16(2), pp.66–75.
- [25] UN Water (2023) *Progress on SDG 6: Clean Water and Sanitation – 2023 Update*. United Nations, New York.
- [26] Ramesh, S. & Thomas, J. (2023) IoT sensors for groundwater fluoride detection: A case study from Tamil Nadu. *Smart Environmental Engineering*, 5(3), pp.93–105.

- [27] Das, A., Pal, A. & Sinha, S. (2022). Aluminium in drinking water: Occurrence, health effects and management. *Water Research*, 217, 118421.
- [28] Gupta, R., Verma, N. & Singh, D. (2022). Groundwater contamination and fluoride toxicity in rural India: Sources, impacts and mitigation. *Environmental Monitoring and Assessment*, 194, 445. .
- [29] Desai, N. & Rao, V. (2022) Smart water pumps and rural resilience: Lessons from Gujarat. *Water Technology and Development*, 15(1), pp.51–63.
- [30] WaterAid (2022) Annual Impact Report on Rural Water Programs. WaterAid India.
- [31] Sharma, A., Tiwari, R. & Mishra, P. (2022) Role of village water committees in sustainable WASH outcomes in Uttar Pradesh. *Rural Governance Review*, 10(2), pp.122–139.
- [32] Oketch, P., Mugisha, J. & Oloo, R. (2022) Impact of point-of-use chlorination on diarrheal incidence in Uganda. *African Journal of Water Safety*, 18(3), pp.148–161.
- [33] Adams, J., OduroKwarteng, S. & Mensah, E. (2021). Prevalence of fecal contamination in rural handpump wells in SubSaharan Africa and South Asia. *Public Health Reviews*, 42(1), pp.17–29.
- [34] Tang, F. H. M., Lenzen, M., McBratney, A., & Maggi, F. (2021). Risk of pesticide pollution at the global scale. *Nature Geoscience*, 14(3), 206–210. <https://doi.org/10.1038/s41561-021-00712-5>
- [35] Biswas, R., Ghosh, S. & Saha, N. (2021). Arsenic exposure and human health: A review of current evidence and future challenges. *Environmental Geochemistry and Health*, 43, pp.873–889. .
- [36] Baral, K. & Gupta, S. (2021) Effectiveness of WASH programs on school children's health in rural Nepal. *International Journal of Public Health Education*, 14(4), pp.88–97.
- [37] Chakraborty, R. & Bhattacharjee, S. (2021). Human health implications of nickel contamination in drinking water: A review. *International Journal of Environmental Health Research*, 31(2), pp.123–134. .
- [38] Fernando, D., Pathirana, R. & Siriwardena, H. (2021). Tackling groundwater pollution in South Asia: Public policy and sustainable strategies. *Groundwater for Sustainable Development*, 15, 100693. .
- [39] Government of India (2021) Jal Jeevan Mission Annual Report 2020–21. Ministry of Jal Shakti, New Delhi.
- [40] Méndez, R., Larios, J. & Duran, A. (2021) Evaluating the effectiveness of solar disinfection (SODIS) in high-altitude rural Peru. *Clean Water Practices*, 11(1), pp.71–79.
- [41] Mandal, S. & Hati, A. (2021). Global distribution of fluoride-contaminated areas in relation to climate change. *Environmental Geochemistry and Health*. Available at: [https://www.researchgate.net/figure/Global-distribution-of-fluoride-contaminated-areas-in-relation-to-climate-change\\_fig2\\_351447130](https://www.researchgate.net/figure/Global-distribution-of-fluoride-contaminated-areas-in-relation-to-climate-change_fig2_351447130)
- [42] Jain, S. & Rao, M. (2021). Emerging pollutants in rural aquifers: pharmaceuticals, microplastics and endocrine disruptors. *Journal of Emerging Water Contaminants*, 3(1), pp.45–60.
- [43] Ahmed, N. & Sen, S. (2020) Community-led total sanitation: A catalyst for rural hygiene in South Asia. *Global Sanitation Studies*, 6(2), pp.112–129.
- [44] Singh, D., Pradhan, R. & Jain, M. (2020) Reverse osmosis in rural India: Adoption and challenges. *Journal of Rural Water Technologies*, 8(1), pp.43–59.
- [45] Singh, R. & Reddy, J. (2020). Health effects of nitrate ingestion from fertilizers in rural water places. *Journal of Toxicological Sciences*, 38(4), pp.255–263.
- [46] Podgorski, J. & Berg, M. (2020). Global arsenic in groundwater: exposure, hotspots and risk overlaps. *Science*, 368(6493), pp.845–850.
- [47] Rashid, M.H., Ali, N. & Khan, M.A. (2020). Fluoride toxicity and its potential health risks in rural communities: A case study. *Environmental Science and Pollution Research*, 27, pp.11921–11929. .
- [48] Singh, A. & Mehta, P. (2020). Mercury in drinking water: A review on public health risk, detection, and remediation. *Journal of Environmental Chemical Engineering*, 8(5), 104317. .
- [49] Banerjee, S., Chatterjee, A. & Mukhopadhyay, A. (2020). Industrial effluent discharge and heavy metal contamination in rural India: A case of leather and dyeing units. *Environmental Pollution & Toxicology*, 14(2), pp.98–110.
- [50] Bhattacharya, P., Das, R. & Chatterjee, S. (2020). Global arsenic exposure in drinking water: magnitude and health implications. *Environmental Health Insights*, 14(4), pp.1–12.
- [51] Kumar, R. & Meena, S. (2020) Sanitation-led transformation: The Swachh Bharat model. *Indian Journal of Sanitation Research*, 7(2), pp.33–42.
- [52] FAO–WHO. (2020). Pesticide residues in groundwater: global hotspots and exposure risks. *Journal of Water & Food Safety*, 7(3), pp.201–212.
- [53] Patra, A., Kar, S. & Bhunia, A. (2019). Elevated iron and manganese levels in drinking water: Implications for public health. *Journal of Environmental Management*, 234, pp.409–417.
- [54] IARC (International Agency for Research on Cancer). (2019). Carcinogenic risks of uranium and heavy metals in groundwater. *Scientific Monographs of IARC*, 125, pp.89–104.
- [55] Mwangi, T. & Ouma, L. (2019) Local water source protection in rural Kenya: Best practices and barriers. *East African Water Studies*, 6(4), pp.199–214.

- [56] Rahman, M.M., Asaduzzaman, M. & Naidu, R. (2019). Chronic exposure of arsenic via drinking water and its adverse health impacts on humans. *Environmental Geochemistry and Health*, 41, pp.939–965. .
- [57] Bandyopadhyay, S., Roy, D. & Goswami, B. (2018) Harvesting rain: A sustainable water solution for fluoride-affected areas. *Journal of Rural Water Research*, 9(3), pp.205–213.
- [58] Verma, K., Pandey, A. & Yadav, R. (2018). Lead contamination in groundwater and its impact on children's health: A case study. *Environmental Monitoring and Assessment*, 190, 635. .